



Key

-  AB pair
-  BA pair

Pattern

CO 208 AB pairs. Join in the round, being careful not to twist. Place marker(s) at beginning/end and (optionally) at halfway point (104 pairs from beginning).

1. Follow Chart 1 (1a+1b) twice around, slipping markers if present.
 2. Remove marker, **work 9 slipped pairs**, replace marker.
 3. Follow Chart 2 (2a+2b) twice around, slipping markers if present.
 4. Remove marker, **work 7 slipped pairs**, replace marker.
 5. Repeat steps 1-4 once (twice) more for a total height of ~8 (12)".
- BO with AB pairs, weave in ends, block if necessary and enjoy!

Chart 1a

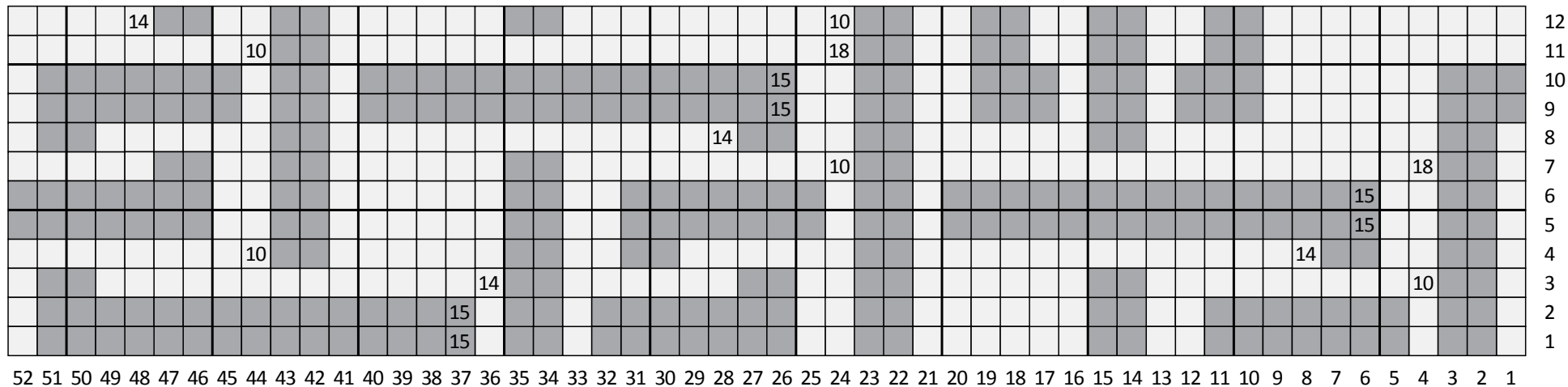
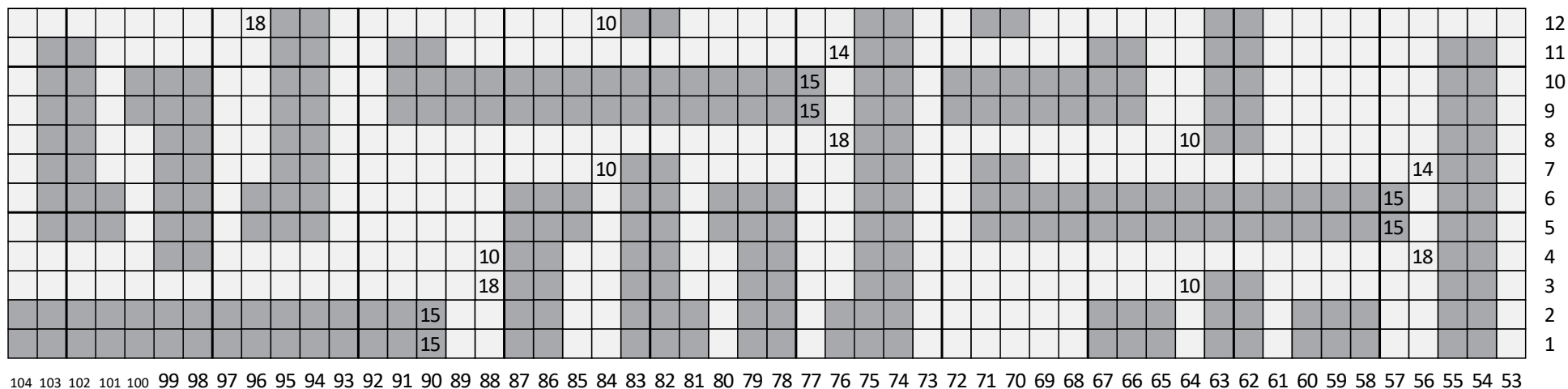


Chart 1b



Pattern Notes

Pay special attention to steps 2 and 4. In these steps, the pattern is recentered by slipping pairs. Without recentering, this chart would be immense and would not fit on the pages of this book (and still be readable). If you are using a halfway marker, you will also want to move that 9 pairs or 7 pairs forward, respectively.

I've done something unusual in this chart that I think you'll appreciate it. Any time when there's a span of one color order that's longer than 7 pairs, I've included a number in the first pixel in the group. That number corresponds to the number of pairs before the next color change. **Note that Charts 1a and 1b are simply a single chart broken in half to fit on the page, so the numbers will reflect that; the same is true for 2a and 2b.**

Chart 2a

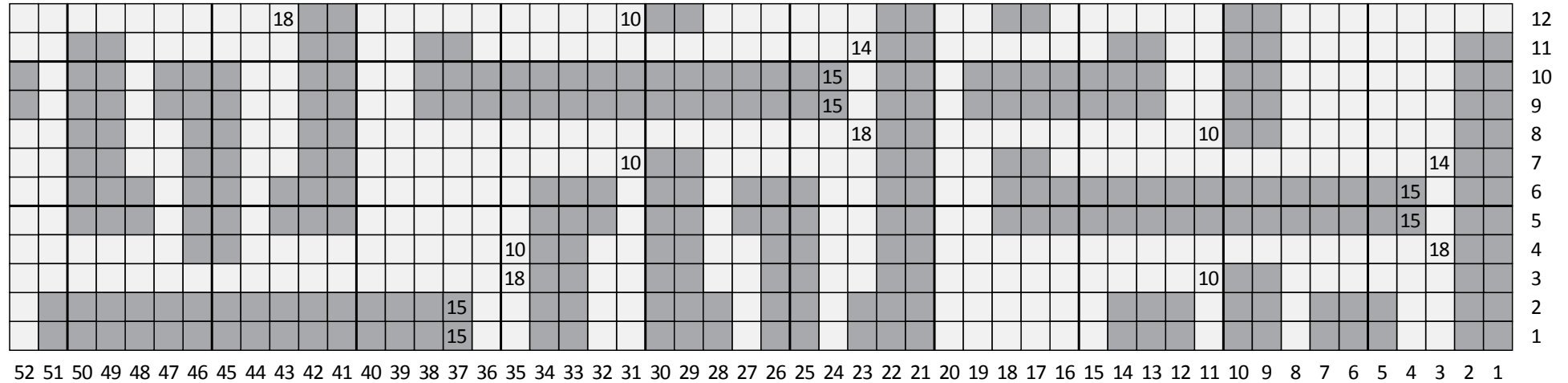


Chart 2b

